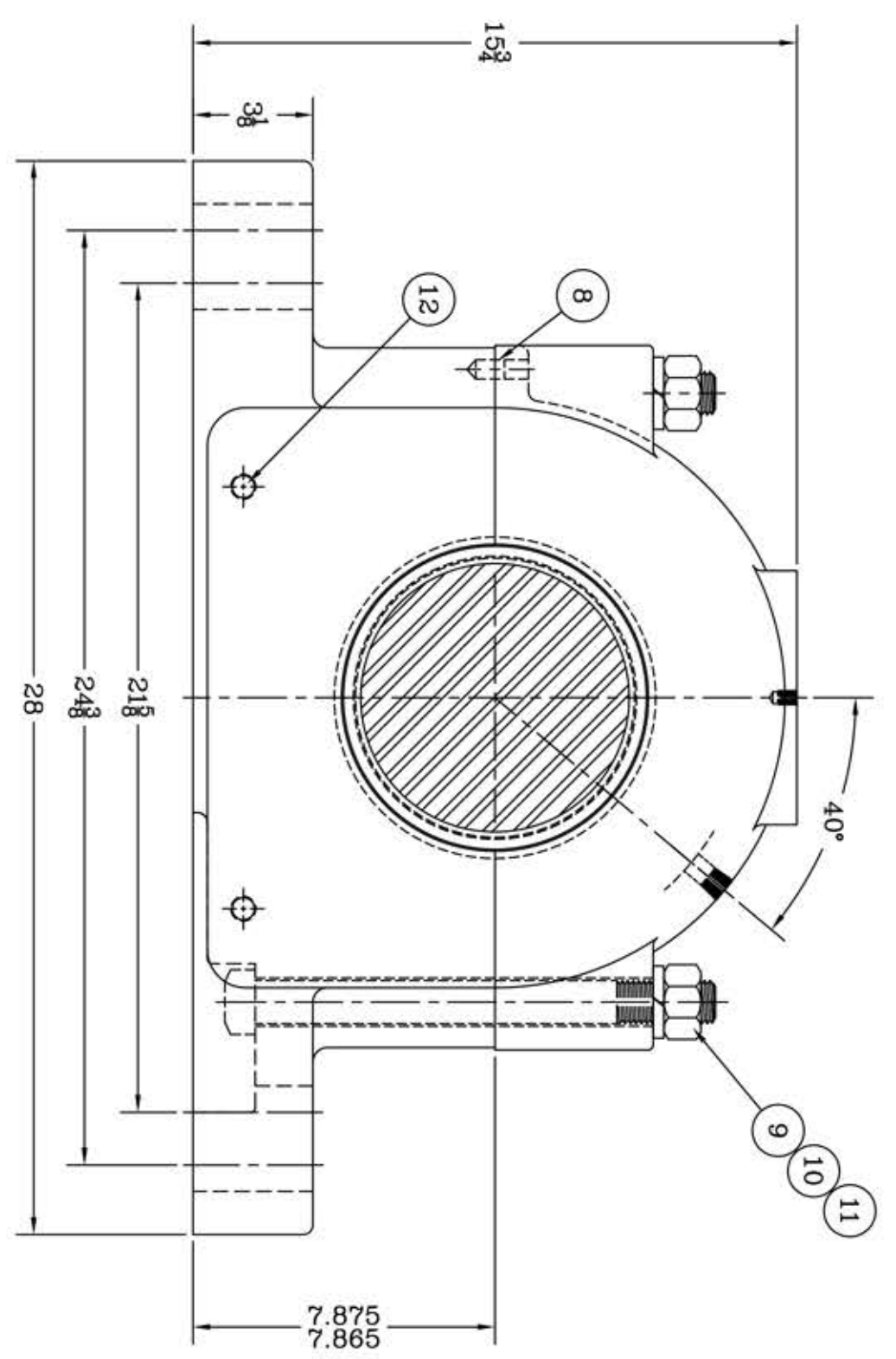
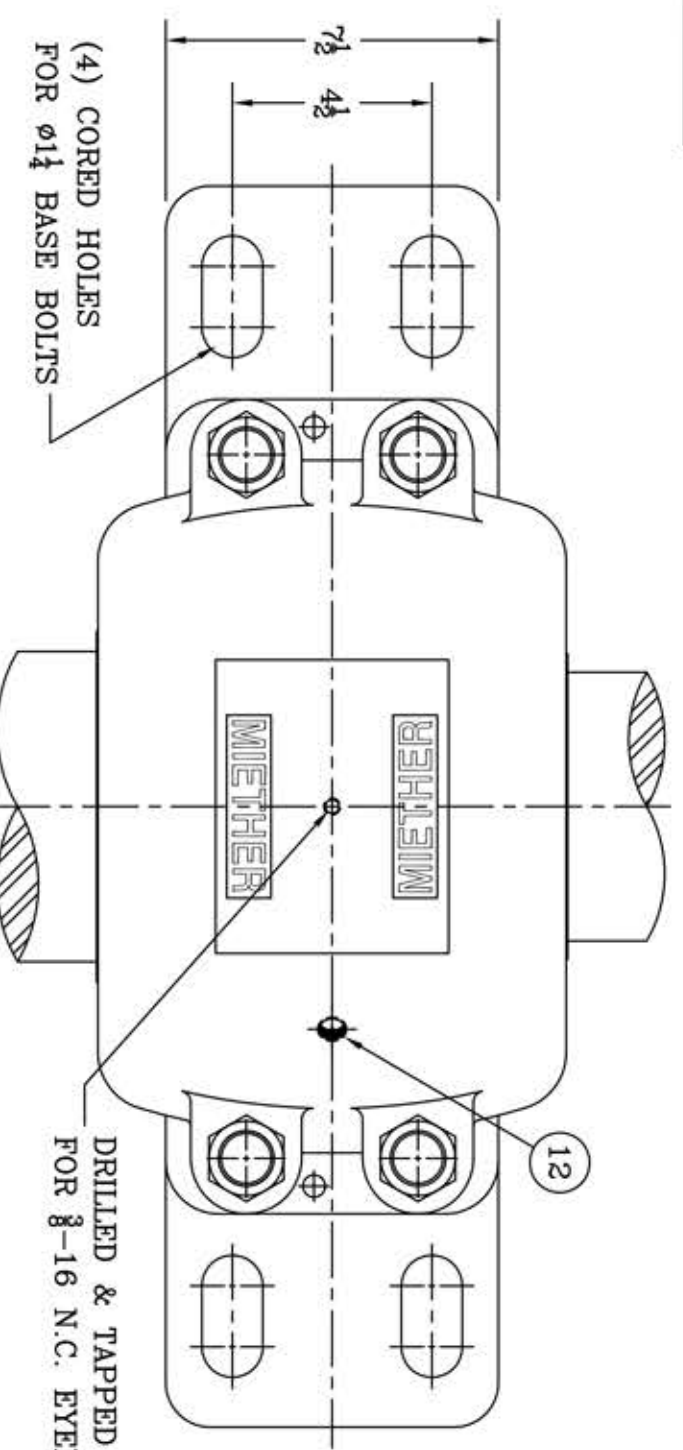
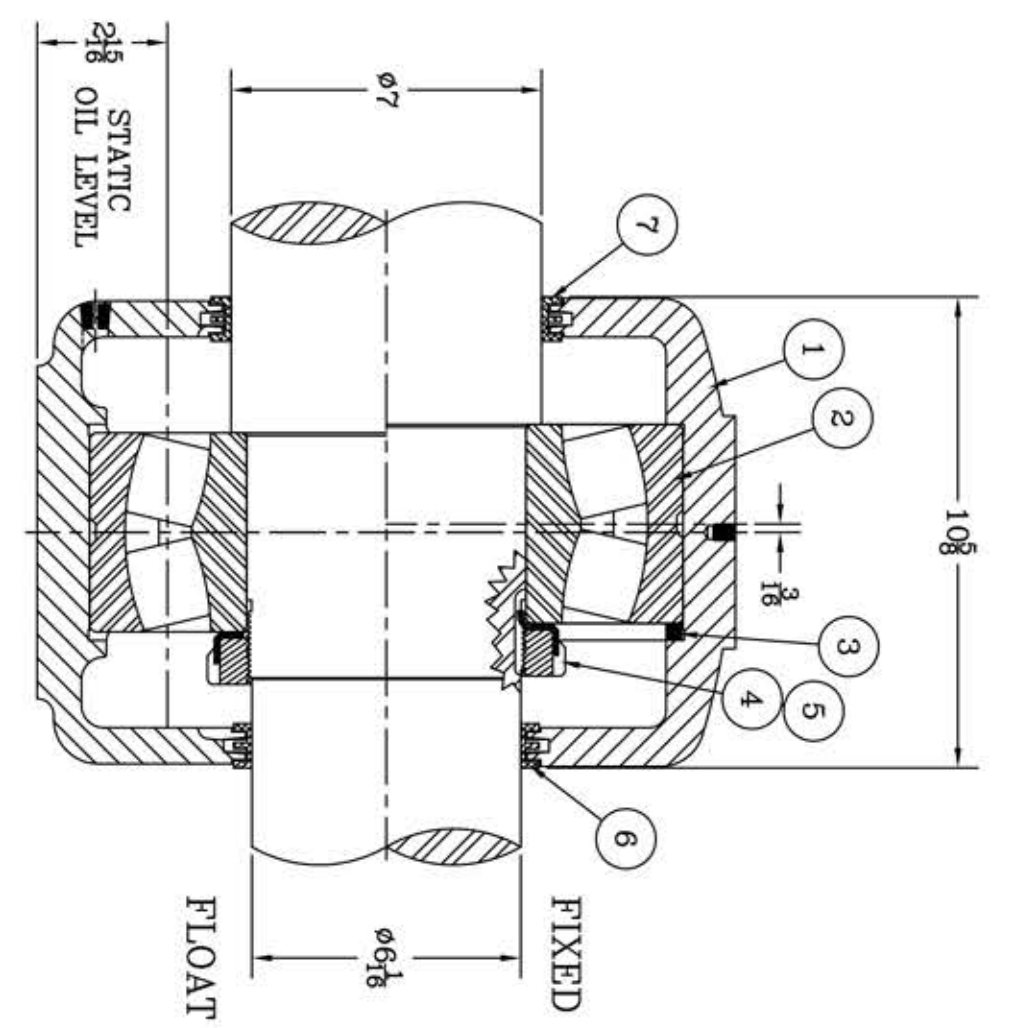


This drawing is the sole property of Miether Bearing Products and contains confidential and proprietary information. It is being provided to you for your use and may not be disclosed to any third party or used for any other purpose without Miether's prior written consent. The [materials] must be returned to the Company upon its demand. Your acceptance of these materials constitutes your acceptance of the foregoing terms.

C-14422



ITEM	DESCRIPTION	DETAIL	REQUIRED
1	HOUSING SAF 332	C-13175-R	1 1
2	SPHERICAL ROLLER BEARING	22332/W-33	1 1
3	STABILIZING RING SR-38-32	A-10555	1 0
4	LOCKNUT AN-32	B-10420	1 1
5	LOCKWASHER W-32	00250	1 1
6	TRIPLE SEAL RING LER-142	A-10640	1 1
7	TRIPLE SEAL RING LER-156	A-10588	1 1
8	DOWEL	$\phi 2 \times 1$ " LONG	2 2
9	CAP BOLT SQUARE HEAD	$1\frac{1}{8}$ -7 NC x 12" LONG	4 4
10	CAP BOLT HEX NUT	$1\frac{1}{8}$ -7 NC	4 4
11	LOCKWASHER	$1\frac{1}{8}$ SPLIT MED.	4 4
12	PIPE PLUG	$\frac{3}{8}$ -18 NPT	3 3



REDRAWN FOR CONFORMITY
RWB per KAB
5-11-04

REDRAWN ON COMPUTER by
RWB 5-16-01

REVISIONS

TOLERANCE: UNLESS OTHERWISE SPECIFIED

FRACTIONS $\pm 1/32$ " ANGLES $\pm 0^\circ 30'$

DECIMALS $\pm .005$ " WELD $\pm 1/16$ "

CASTING $\pm 1/16$ "

A.I.S.I. STANDARD FINISHES

SYMBOL	VALUE	SYMBOL	VALUE	SYMBOL	VALUE	SYMBOL	VALUE
C	16	D	32	E	63	F	125
G	250	J	500	K	1000		

AN ALCO INDUSTRIES COMPANY
BEARING PRODUCTS
ODESSA, TX USA

SAF 22332 07-00 x 06-01

ASSEMBLY DRAWING

SCALE 1 = 3

DRAWN ---

DATE 12/30/70

CHK: ---

ASSEMBLY NO. ---

DRAWING NO. C-14422